

# History of Campus Fire Safety

On January 19, 2000 three students were killed and 58 students and four firefighters were injured when a fire erupted at Seton Hall University. It was one of the deadliest college fires in recent US history.



The fire started at 4:30 am and spread rapidly across three couches in the third floor lounge. The fire approached temperatures of up to 1500° F in less than five minutes. Though no accelerant was used, the fire burned hot enough to melt the synthetic carpet of the hall, causing severe injuries to many of the students attempting to escape by crawling on the floor.

It was found later that two students set the fire as a prank and ran away instead of assisting in the evacuation.

On February 14, 2000 then NYS Governor Pataki created a Task Force on Campus Fire Safety. As a result, the Campus Fire Safety Code was implemented, requiring Universities to abide by NYS Fire Code and instituting an annual inspection by NYS.

# Recommendations

## • Power Strips with Surge Protector



- Purchase power strips with long cords that can be routed along the perimeter of the room.
- If there is a power surge the strip will turn off, protecting your electrical equipment.

## • Extension Cords, Ethernet, and Cables

- Extension cords should only be used for temporary uses. Heavy-duty extension cords should be used to handle power load.
- Purchase long cables (at least 25 feet). They should be able to route along perimeter of room.

## • Alternatives to the hot plate

- Microwaves
- Hot Pot or electric kettle
- Any alternatives must have an internal heating element



Clarkson University  
8 Clarkson Avenue  
Potsdam, NY 13699-5563

Elayna Mellas, Environmental Health & Safety Manager  
268-6640, emellas@clarkson.edu

Revised 7/22/09

Campus Safety & Security .....x 6666  
Office of Risk Management and  
Environmental Health & Safety.....x 6640

# PROHIBITED ITEMS AND ACTIONS

- **Zip Cord Extension Cords**

Zip Cords are not designed to handle large electrical loads



- **Extension Cords, Ethernet, and Cables**

- Do NOT connect multiple extension cords and/or power strips together.
- Never route cable over the ceiling.
- Do not tape cables to floor as it could cause unseen damage to cable, leading to potential fire hazards.

- **Multi-color Floor Lamps**

We would prefer if these lamps not be used in University housing. However, if you do plan on using these lamps, be sure to use the correct bulbs. The wrong bulb wattage could lead to a malfunction.



- **Halogen Lamps** are not allowed in university housing.

- **Candles and Incense** are not allowed in university housing. Candles and incense found burned, including evidence of burning, will be considered a violation of Housing Code of Conduct.



- **Christmas trees, decorative lights and rope lights** are not permitted in university housing.

- **Flammable Substances and Hazardous Materials** cannot be stored inside residence facilities. This includes, but is not limited to:

- LP tanks for gas or camping fuel
- Lighter fluid
- Motorcycles, motorbikes, etc
- Fire arms
- Explosives or chemicals

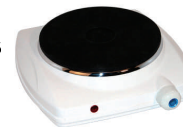
- **Gas or charcoal grills**  
Grills must be stored a minimum of 10 feet from buildings.



- **Smoking** is prohibited in all university buildings, including housing. Smokers must be 30 feet from any building entrance while smoking.

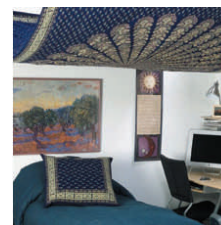


- **Stoves, hot plates, toasters or toaster ovens, space heaters, and air conditioners** are not allowed in university housing.



- **Tapestries and Posters**

- Cannot be attached to the ceiling.
- Limit the number of posters and tapestries, as they assist in spreading fires



- **NEVER** tamper with fire safety equipment unless it is an emergency. Students found tampering with equipment may be fined \$100 (subject to change).

- **NEVER** hang or attach anything to sprinkler pipes in student rooms or hallways. Also, cages cannot be removed from the sprinkler heads. Tampering with sprinkler the system may result in a fine of \$100 (subject to change).

- **NEVER** block fire safety equipment. This includes, but is not limited to pull stations, fire extinguishers, and smoke detectors.



- **DO NOT** move fire extinguishers. They must remain accessible.

- **NEVER** cover a smoke detector. Also, do not wrap cables around the detector.

- Exits and egresses must remain clear at all times. A 36 inch wide clearance must be maintained for all standard doors.

- Combustible materials cannot be stored in the hallways of dorms or apartment buildings.
- Do **NOT** leave your garbage in the hallway—it is your responsibility to dispose of it appropriately.
- Shoes cannot be stored in the hallways.
- Do not store items on the stairs in Riverside or Townhouse apartments.

